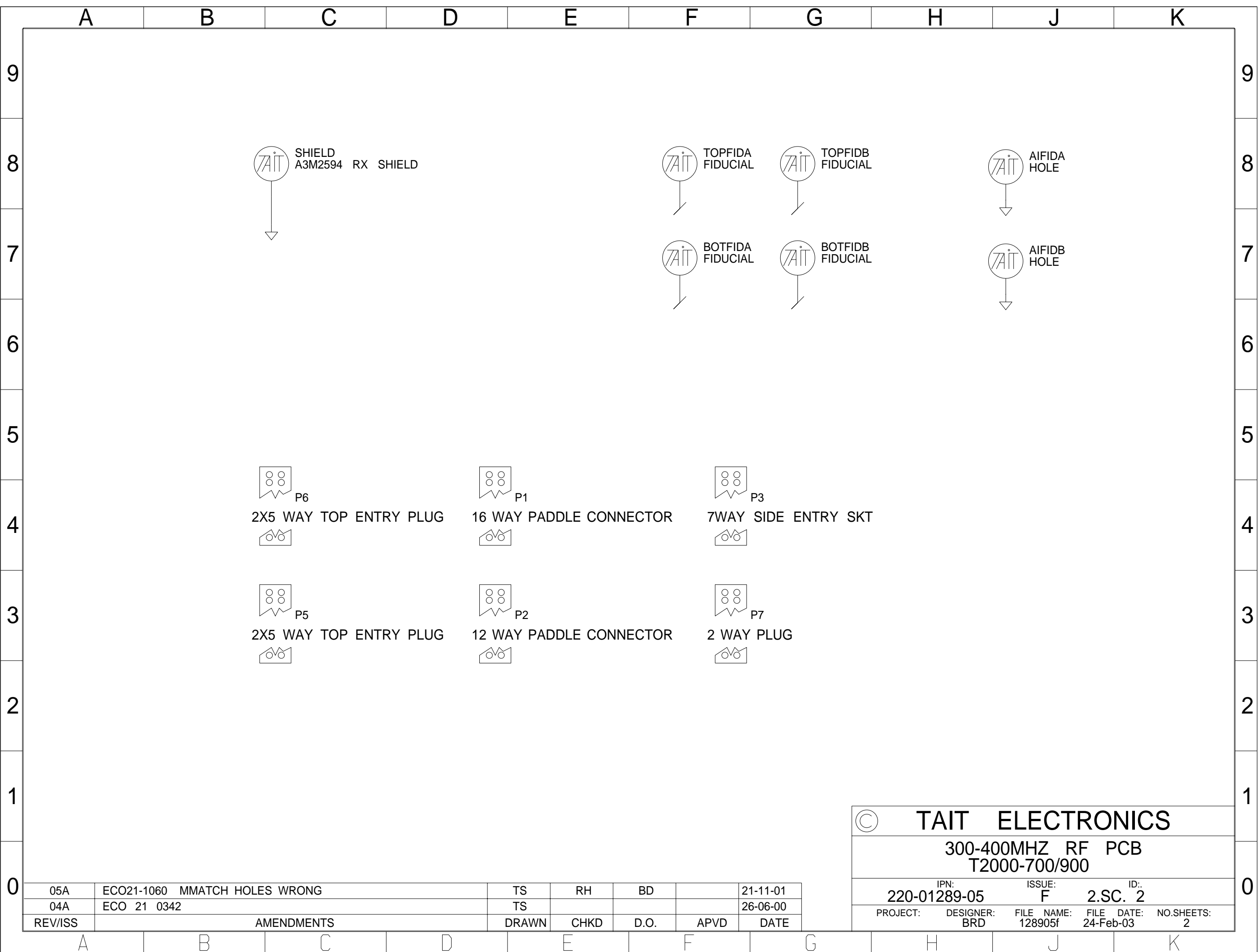


NOTE: THIS SCHEMATIC CORRESPONDS TO THE T2000-700 340-360 MHZ

REV/ISS	DESCRIPTION	DATE
05F	BLUE MASK GENERATED	24-02-03
05A	ECO21-1066 MMATCH HOLES CHANGED	21-11-01
04A	ECO 21 0342	03-08-00
3A	CONCRETE	28/03/97
3A	RELAY CYCLIC-KEYING,10MS DELAY	24/02/97
3A	CNOTE	96/07-406,96/08-453
3A	CNOTE	96/04-207,96/06-523
3A	EMC MODS CHANGE NOTE 96/04-207	11/02/97

VER	FREQ	#C107	#C109	#C112	#C113	#C115	#C117	#C118	#C121	#C122	#C301	#C302	#C303	#C305	#C306	#C308	#C309	#C313	#C314	#C323	#C330	#C331	#L104	#L105	#L106	#L300	#L301	#L305	#L307	#L321	#R318	#R319	
900	360-400	4P7S	8P2S	1P5S	8P2S	12P5	1P5S	8P2S	10P5	10P5	220PS	6P8S	18PUH	12PS	22PS	22PS	22PS	10PS	6P8S	18PAHV	10PUH	10PUH	664	664	664	10S40	15H40	15H30	10S20	220X	220X		
700	340-360	5P6S	NF	1P2S	NF	6P2S	1P2S	NF	5P6S	5P6S	270PS	8P2S	15PUH	15PS	15PS	27PS	47PS	56PS	56PS	4P7S	27PAHV	8P2UH	8P2UH	674	674	674	10S35	15H40	25H30	15H25	10S20	47X	47X

© TAIT ELECTRONICS
300-400MHZ RF PCB
T2000-700/900
ISSUE ID
220-01289-05 F 2 SC. 1
PROJECT: DESIGNER: FILE NAME: NO: SHEETS: 2
T2000-700 BRD: 12889/ 24/FB-03



© **TAIT ELECTRONICS**
 300-400MHZ RF PCB
 T2000-700/900
 IPN: 220-01289-05 ISSUE: F ID: 2.SC. 2
 PROJECT: BRD DESIGNER: BRD FILE NAME: 128905f FILE DATE: 24-Feb-03 NO.SHEETS: 2

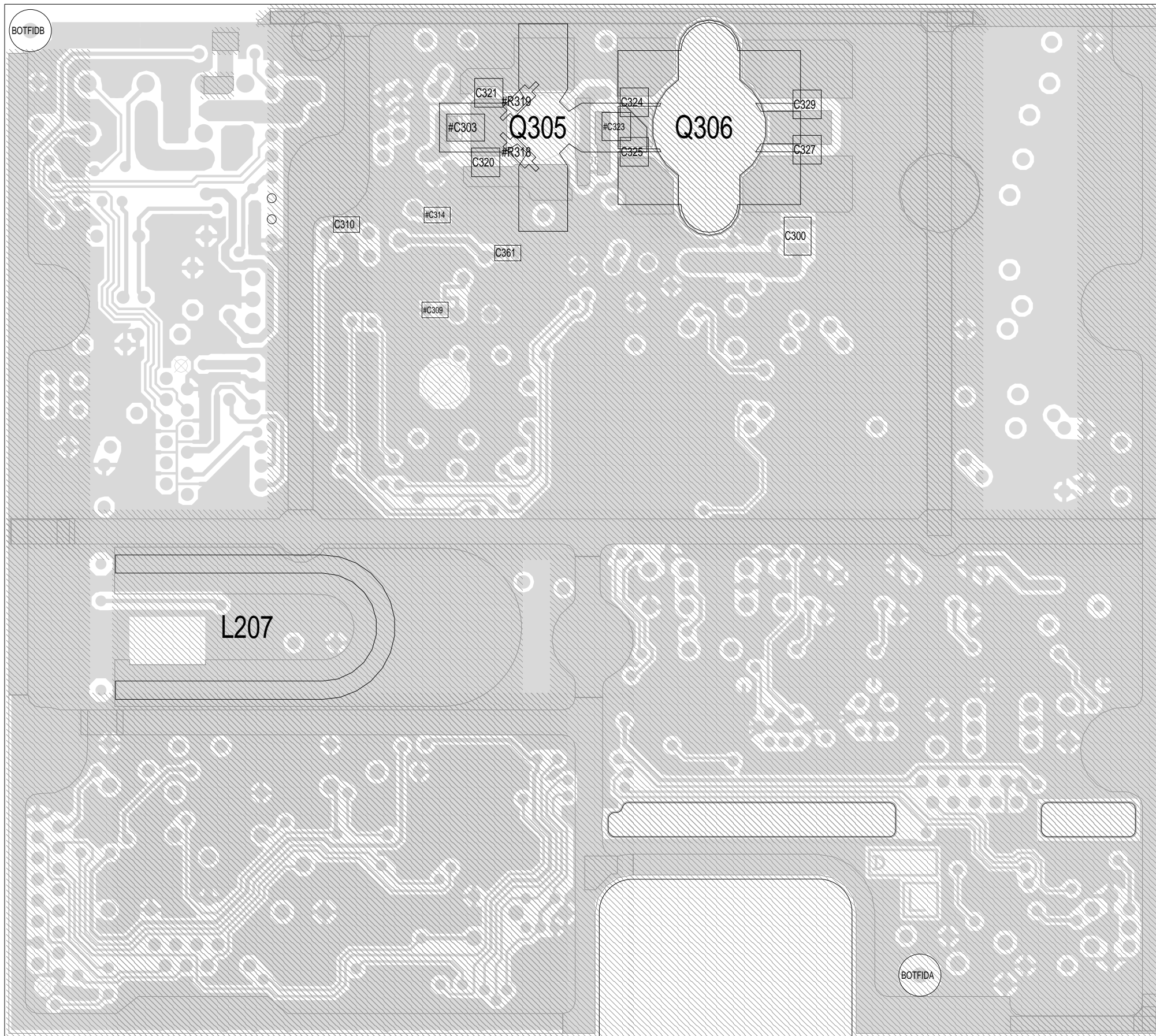
05A	ECO21-1060 MMATCH HOLES WRONG	TS	RH	BD		21-11-01
04A	ECO 21 0342	TS				26-06-00
REV/ISS	AMENDMENTS	DRAWN	CHKD	D.O.	APVD	DATE



P3

TAIT ELECTRONICS	IPN: 220-01289-05	ISS: A	ID: 1.TA	DATE: 21 Nov 2001
T2000-700 PCB LAYOUT - TOP SIDE				

Scale: 1:9.1 ; Rotation: 0 degrees



10
9
8
7
6
5
4
3
2
1

L K J H G F E D C B A

TAIT ELECTRONICS	IPN:	ISS:	ID:	DATE:
	220-01289-05	A	2.BA	21 Nov 2001
T2000-700 PCB LAYOUT - BOTTOM SIDE				

Scale: 1.9:1 ; Rotation: 0 degrees